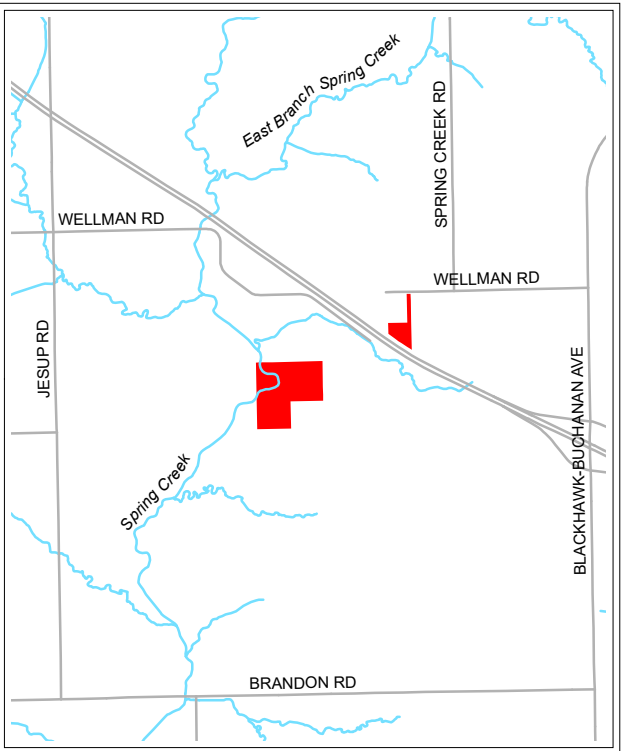


# Spring Creek Prairie & Geologic Study Area



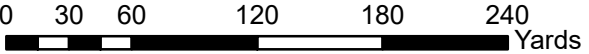
## Legend

- Parking
- Hunting
- No Hunting
- Park Boundary

- 5 Acres - Historical Cemetery
- 32 Acres - Spring Creek Geologic Study Area
- Hunting
- Hiking
- Bird Watching
- Fossil Hunting



Managed by  
 Black Hawk County Conservation  
 1346 Airline Highway  
 Waterloo, IA 50703  
 (319) 433-PARK (7275)  
[www.blackhawkcountyparks.com](http://www.blackhawkcountyparks.com)



**DISCLAIMER:**  
 This map does not represent a survey, no liability is assumed for the accuracy of the data delineated herein, either expressed or implied by Black Hawk County, the Black Hawk County Assessor, or their employees. This map is compiled from official records including plats, surveys, recorded deeds, and contracts, and only contains information required for local government purposes. See the recorded documents for more detailed legal information.  
 Date: 11/19/2024

E-911 Address: 13310 Wellman Road, La Porte City

